

## Westfield Fasteners Product Specification:

### DIN 3570 - U Bolts

This product guide contains the specification for U Bolts, a series of standard parts available from Westfield Fasteners. The basis of this specification is the internationally recognised DIN standard DIN 3570.

#### Product Description

U-Bolts are designed to hold and support pipes and cables. They are also known as pipe clamps, tube bolts and U clamps. They are commonly used for TV aerials, satellite dishes, masts, trailers, plumbing and marine applications. The size of the U bolt required depends on the diameter of the pipe and the length of the threaded ends needed. These U bolts are sold without the nuts and washers as shown in figure 1, but these are available separately.

#### Scope of the DIN Standard

DIN 3570 specifies the dimensions for U bolts for nominal widths of pipes between 20 and 500 mm, and includes thread diameters from M10 up to M24. We are currently able to source variants from the standard in M10 and M12 only. We also stock sizes with an M8 thread. These do not form part of this standard, but follow a similar logic in terms of sizing. Please see the table 1 below for all sizes listed to DIN 3570 together with non-standard sizes available similar to this specification.

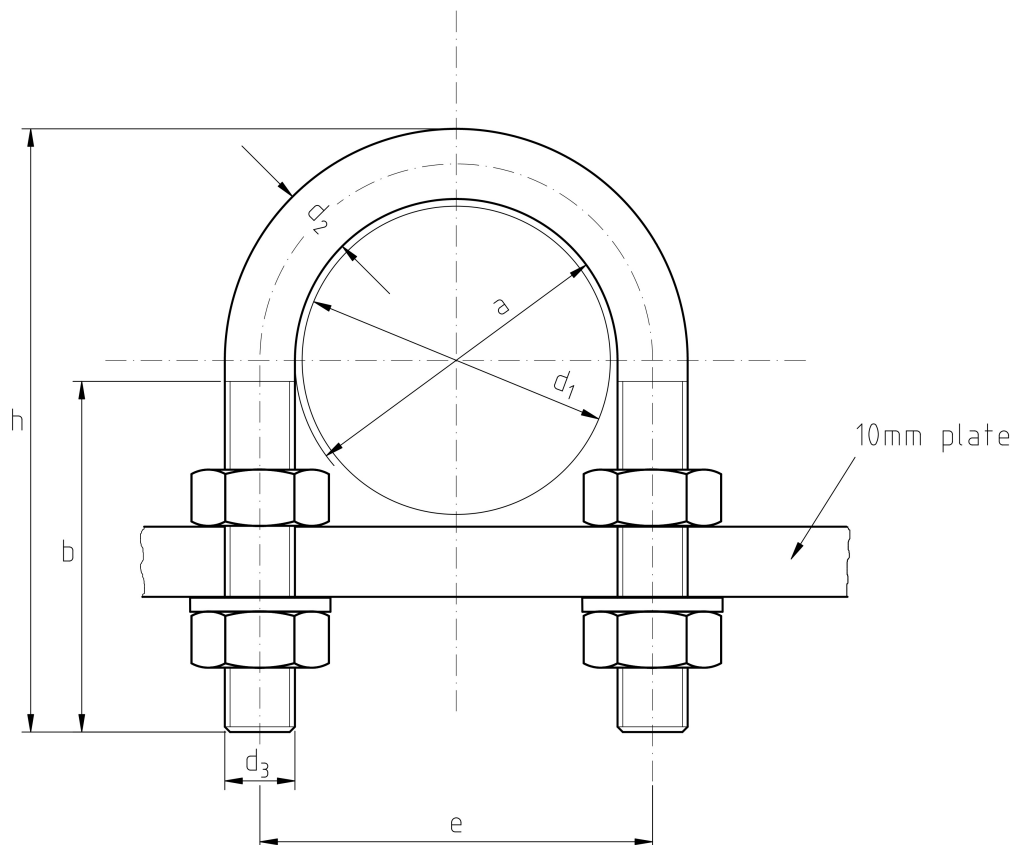


Figure 1: U Bolts

**Table 1: Dimensions and Tolerances according to DIN 3570. Table includes non standard sizes.**

a	For use with Tubes of			b	d <sub>2</sub>	d <sub>3</sub>	e	h
	d <sub>1</sub>	Nominal Width						
23*	-	-	-	20	7.10	M8	31.0	38
28*	-	-	-	20			36.0	46
35*	-	-	-	25			43.0	50
42*	-	-	-	30			50.0	60
35*	-	-	-	35			43.0	80
65*	-	-	-	50			73.0	110
82*	-	-	-	50			90.0	120
23*	-	-	1/2"	33	10	M10	-	65
30	25	20	3/4"	40	10	M10	40	70
	26.9							
38	30	25	1"				48	76
	33.7							
46	38	32	1 1/4"	50			56	86
	42.4							
52	44.5	40	1 1/2"				62	92
	48.3							
64	57	50	2"		12	M12	76	109
	60.3							
82	76.1	65	2 1/2"	94			125	
94	88.9	80	3"	106			138	
120	108	100	4"	60	16	M16	136	171
	114.3							
148	133	125	-				164	191
	139.7		-					
176	159	150	-				192	217
	168.3		-					
202	191	175	-				218	249
	193.7		-					
228	216	200	-	70	20	M20	248	283
	219.1		-					
282	267	250	-				302	334
	273		-					
332	318	300	-				352	385
	323.9		-					
378	355.6	350	-		24	M24	402	435
	368		-					
428	406.4	400	-				452	487
	419		-					
530	508	500	-				554	589
	521		-					

\* Non standard sizes.

For further details, please refer to the ISO/DIN standard document for this item.