



Westfield Fasteners Product Specification:

DIN 934 - Full Hex Nuts with Fine Pitch Thread

This specification covers metric threaded full hex nuts with a fine pitch thread. These items are a standard part available from Westfield Fasteners. The basis of this specification is the DIN standard DIN 934.

Product Description

Fine pitch threaded hexagon full nut to DIN standard 934. The significantly more unusual fine pitch variant of the standard metric coarse pitch hex nut, used where more thread engagement is desired. For use in conjunction with a matching fine thread pitch bolts, screws or studs. Typically fitted with a spanner or ratchet with socket.

Scope of the DIN Standard.

DIN 934 governs the dimensions, tolerances and general form of hexagon full nuts, for sizes from M1 up to and including M160. Refer to figure 1 and table 1 below for the relevant information for fine pitch variants. Although the DIN 934 standard has now been superseded by ISO 4032, off the shelf parts are generally still manufactured to the older specification.

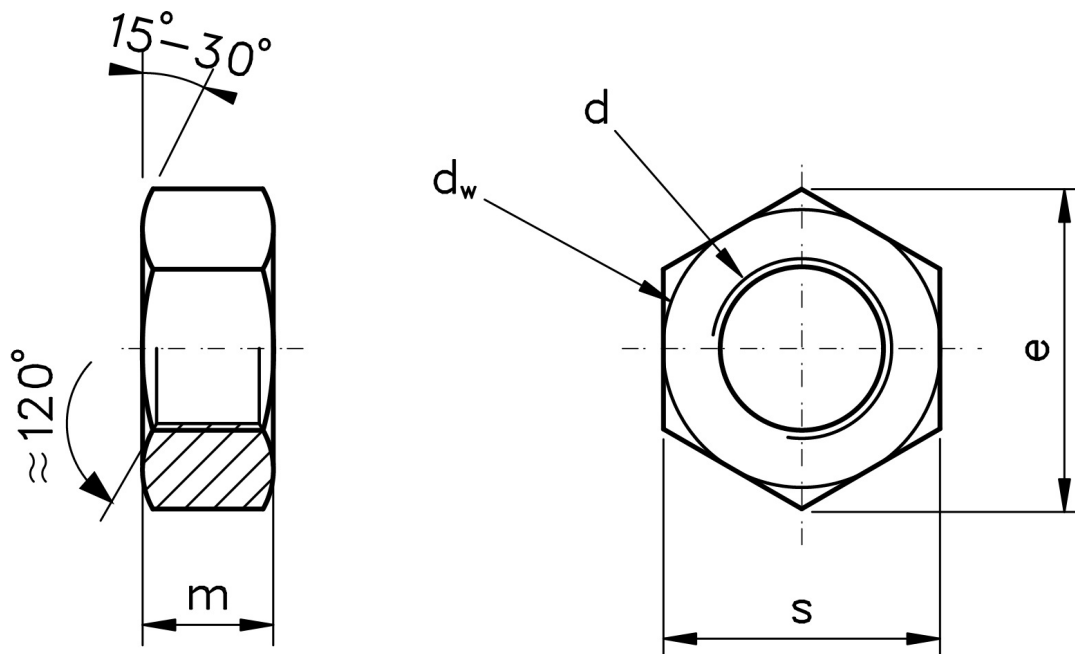


Figure 1: Full Hex Nut Fine Pitch

Variations from DIN 934

DIN 934 covers materials including carbon steel, and A2 & A4 stainless steel. The hex nuts we stock in other materials and grades are made with reference to this standard, but are not mentioned specifically.

Table 1: Dimensions & Tolerances according to DIN 934 (mm)

Thread, d		M8	M10	M12	M14	M16	M18	M20	M22	M24	M27	M30	M33	M36	M39
Fine Pitch Threads		M8x1	M10x1	M12x1.5	M14x1.5	M16x1.5	M18x1.5	M20x2	M22x1.5	M24x2	M27x2	M30x2	M33x2	M36x3	M39x3
		-	M10x1.25	M12x1.25	-	-	M18x2	M20x1.5	M22x2	-	-	-	-	-	-
(Standard Pitch)		1.25	1.5	1.75	2	2	2.5	2.5	2.5	3	3	3.5	3.5	4	4
d _a	min	8	10	12	14	16	18	20	22	24	27	30	33	36	39
	max	8.75	10.8	13	15.1	17.3	19.5	21.6	23.7	25.9	29.1	32.4	35.6	38.9	42.1
d _w	min	11.3	15.3	17.2	20.2	22.2	25.3	28.2	29.5	33.2	38	42.7	46.6	51.1	55.9
e	min	14.38	18.90	21.10	14.49	26.75	29.56	32.95	35.03	39.55	45.2	50.85	55.37	60.79	66.44
m	nom=max	6.5	8	10	11	13	15	16	18	19	22	24	26	29	31
	min	6.14	7.64	9.64	10.3	12.3	14.3	14.9	16.9	17.7	20.7	22.7	24.7	27.4	29.4
s	nom=max	13	17	19	22	24	27	30	32	36	41	46	50	55	60
	min	12.73	16.73	18.67	21.67	23.67	26.16	29.16	31	35	40	45	49	53.8	58.8

For further details, please refer to the ISO/DIN standard document for this item. E&OE