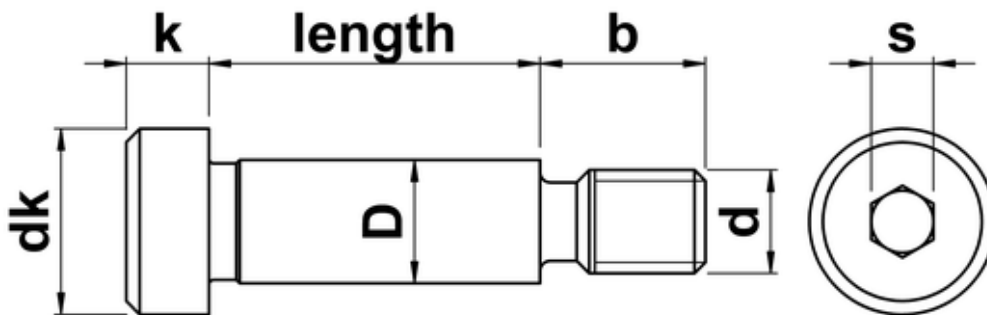




UNC Socket Head Shoulder Screws ASME B18.3-2012

Socket shoulder screw with a UNC imperial coarse thread. They are also known as shoulder bolts, precision shoulder screw and in the US, stripper bolts. The main dimensions are for the diameter and total length required under the head. Shoulder screws have an undercut portion between the thread and shoulder, allowing a close fit. They are used in a wide range of punch and die operations and as shafts, pivots, guides, pins, linkages and trunion mountings. Please note that the nominal diameter here refers to the shoulder diameter, except where shown otherwise.



d	D	D max.	D min.	dk max.	dk min.	k max.	k min.	s	d decimal	tpi	b
4-40	1/8	0.1230	0.1210	0.250	0.235	0.125	0.115	5/64 (0.078)	0.1120	40	0.157
6-32	5/32	0.1540	0.1520	0.281	0.266	0.125	0.115	3/32 (0.094)	0.1380	32	0.187
8-32	3/16	0.1850	0.1830	0.312	0.296	0.156	0.146	3/32 (0.094)	0.1640	32	0.189
10-24	1/4	0.2480	0.2460	0.375	0.357	0.188	0.177	1/8 (0.125)	0.1900	24	0.375
1/4	5/16	0.3105	0.3085	0.438	0.419	0.219	0.209	5/32 (0.156)	0.2500	20	0.438
5/16	3/8	0.3730	0.3710	0.562	0.543	0.250	0.240	3/16 (0.188)	0.3125	18	0.500
3/8	1/2	0.4980	0.4960	0.750	0.729	0.312	0.302	3/8 (0.3750)	0.3750	16	0.625
1/2	5/8	0.6230	0.6210	0.875	0.853	0.375	0.365	5/16 (0.312)	0.5000	13	0.750
5/8	3/4	0.7480	0.7460	1.000	0.977	0.500	0.490	3/8 (0.375)	0.6250	11	0.875
3/4	1	0.9980	0.9960	1.312	1.287	0.625	0.610	1/2 (0.500)	0.7500	10	1.000