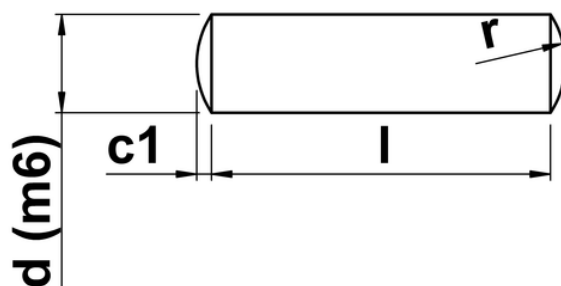




Dowel Pin

Dowel Pins or Parallel Pins are short cylindrical sections of metal used for precise alignment of machine parts and mould tools. They are often also used as reference points for mechanical engineers to ensure repeatable and accurate assemblies. The diameter of these parts is produced to a specific tolerance so that the desired fit can be achieved with a suitably sized and toleranced hole. In this case the ISO fit code is m6.



d	c1	r
1	0.15	1.0
1.5	0.23	1.6
2	0.30	2.0
2.5	0.40	2.5
3	0.45	3.0
4	0.60	4.0
5	0.75	5.0
6	0.90	6.0
8	1.20	8.0
10	1.50	10.0
12	1.80	12.0
16	2.50	16.0
20	3.00	20.0