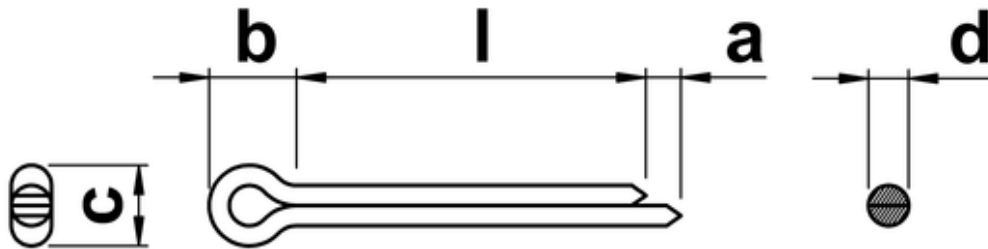




Cotter Pins (DIN 94)

Cotter Pins, also known as Split Pins are designed to be inserted through a hole and bent to secure in place, they are commonly made from wire which is semi-circular in cross section and square cut at the end, other specialist end finishes include Mitre or Bevel. Lengths are measured from the end of the tines to the point the base of the eyelet hole contacts with the host material. An unthreaded fastener solution for single use, as bending fatigue can cause failure if re-used.



d nom.	d max.	d min.	A max.	A min.	B approx.	C max.	C min.
1	0.9	0.6	1.6	0.80	3.0	1.8	1.6
1.2	1.0	0.7	2.5	1.25	3.0	2.0	1.7
1.6	1.4	1.1	2.5	1.25	3.2	2.8	2.4
2	1.8	1.4	2.5	1.25	4.0	3.6	3.2
2.5	2.3	2.0	2.5	1.25	5.0	4.6	4.0
3.2	2.9	2.5	3.2	1.60	6.4	5.8	5.1
4	3.7	3.3	4.0	2.00	8.0	7.4	6.5
5	4.6	4.2	4.0	2.00	10.0	9.2	8.0
6.3	6.2	5.4	4.0	2.00	12.6	11.8	10.3
8	7.5	6.7	4.0	2.00	16.0	15.0	13.1
10	9.5	8.4	6.3	3.20	20.0	19.0	16.6
13	12.4	11.1	6.3	3.20	26.0	24.8	21.7