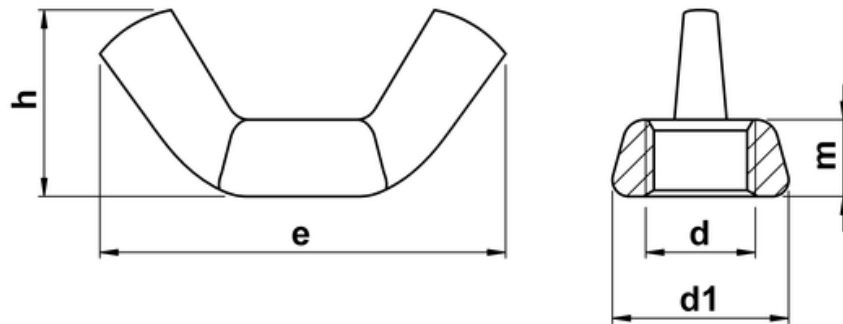




## UNC Wing Nuts ASME B18.6.9

Popularly employed where frequent hand tightening and untightening of joints is required. To ASME B18.6.9.



d	tpi	e	m	h	d1
4-40	40	0.720	0.14	0.410	0.33
5-40	40	0.720	0.14	0.410	0.33
6-32	32	0.720	0.14	0.410	0.33
8-32	32	0.910	0.18	0.470	0.43
10-24	24	0.910	0.18	0.470	0.43
12-24	24	1.10	0.22	0.570	0.50
1/4	20	1.100	0.22	0.570	0.50
5/16	18	1.250	0.25	0.660	0.58
3/8	16	1.440	0.30	0.790	0.70
7/16	14	1.94	0.39	1.00	0.93
1/2	13	1.940	0.39	1.00	0.93
5/8	11	2.760	0.55	1.44	1.19
3/4	10	2.760	0.55	1.44	1.19